

## Veterinary Semi-automatic Chemistry Analyzer

### Model: BS-600V

#### Features:

- 1) 7" adjustable LCD screen
- 2) Windows operation system.
- 3) Test results simultaneously displayed
- 4) Open system for reagents
- 5) Low carry over with air purge
- 6) Flow cell and cuvette Supported
- 7) USB, SD Card and RS-232
- 8) 200 test programs and over 100,000 test results
- 9) Working effectively under high temperature (>40°C)
- 10) Real-time display absorbance curve
- 11) Prolonged light source and filter life by intelligent light source protection
- 12) Communicate with PC by RS232 or Ethernet and data transmissible
- 13) Automatically check if the flow cell or cuvette is in position
- 14) 8 kinds of animals available and 8 additional animals for user to customize



#### Applications:

Pet Hospital and Veterinary Laboratories.  
For Chemical Tests of Dog, Cat, Rabbit, Horse, Cattle, Sheep, Pig, Cow and other user defined animals.

#### Optional:

Touch screen, One more filter, Barcode reader, Software workstation, External printer, Flash disk, SD card, Keyboard, Ethernet port.

## Veterinary Fully-automatic Chemistry Analyzer

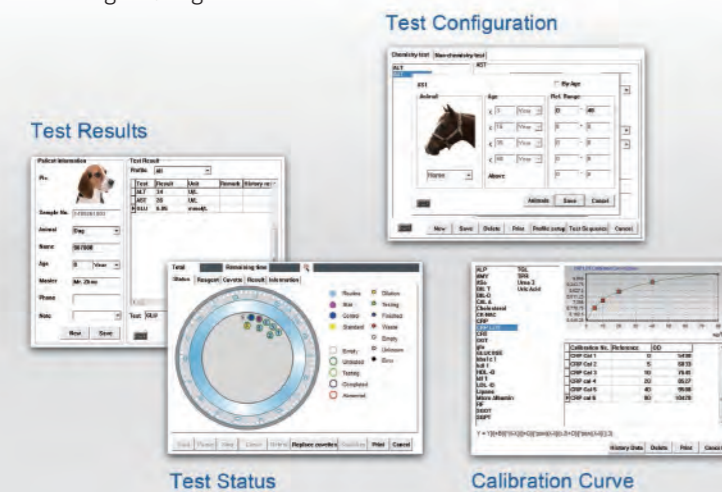
### Model: Chemo 120V

#### Features:

- 1) Fully automatic biochemical analyzer with specialized veterinary software
- 2) 8 pre-determined animals settings and unlimited number of user-defined animal settings
- 3) Throughput up to 100 tests per hour
- 4) Labor saving, simple programming and real walk-away operation
- 5) Reagent open system, closed system on request
- 6) Micro-volume for sample and reagent
- 7) Sample position and reagent position switchable
- 8) Multi-language software supported

#### Specifications:

Animals types: Dog, Cat, Cow, Fish, Horse, Mouse, Pig, Rabbit, etc.  
 Contents of testing: Clinic chemistry, Immunoturbidimetric  
 Analytical modes: End-point, Two Point, Kinetic  
 Programming: Open system with user defined programs  
 Automatic, Random Access  
 STAT sample priority  
 9 postions for sample  
 Sample Volume: 3~45uL, 0.1uL adjustable  
 26 postions for reagents  
 Refrigerated temperature: 4-15°C  
 Reagent volume: R1: 180-450uL, 0.1uL adjustable  
 R2: 3-250uL, 0.1uL adjustable  
 Reaction Postion: 90 cuvettes, 10 cuvettes/strip  
 Cuvette: optical length 5mm  
 Reaction volume: 180-500uL  
 Reaction temperature: 37°C  
 Lamp: Halogen lamp  
 Absorbance range: 0-3.500Abs  
 Wavelengths: 8 wavelengths from 340-700nm  
 Resolution: 0.0001Abs  
 Power supply: AC 110V/220V, 50Hz/60Hz  
 Water consumption: <3L/hour  
 Dimension L\*W\*H(mm): 630\*480\*510  
 Net weight: 70kg



## Portable Veterinary Chemistry Analyzer

### Model: Pointcare V2

#### Features:

By smallest and powerful design, Pointcare V2 delivers reliable diagnostic information, the intelligent innovation refining an efficient and accurate medical experience to veterinary professionals.

#### Easy To Use

Fully automated system- no special operating skills required  
 3.5-inch color LCD touch screen  
 Smallest design only 2.2kg  
 0.1ml whole blood, serum or plasma  
 Barcoded prefabricated calibration information  
 LIS compatible, no need to manually enter patient information  
 Results can be printed via printer or transferred electronically to workstation.

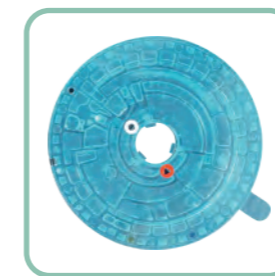
#### Quick Results

From testing sample to generating results in 3 simple steps for only about 10 minutes  
 Three simple steps:

- 1) Add sample: 0.1ml whole blood, serum or plasma
- 2) Insert disc: No manual data entry with self-calibration information included in the QR code
- 3) Read results: Optional external thermal printer, medical data management platform, compatible with HIS.

#### Precise Measurements

Microfluidic discs with pre-installed reagent beads ensure accurate analysis of blood samples and reagents  
 Stable measurement optics include a troboscopic xenon lamp, a wavelength selection system and a multiple-wave-length detector  
 Integrated quality control software monitors the entire process in real time (ensuring consistent analysis of blood samples, reagents, microfluidic discs and chemistry analyzer)



Add sample



Insert disc



Read results

Sample Type	Whole blood(lithium -heparinized), Plasma(lithium -heparinized), Serum
Sample Size	100µl
Time to Results	About 10 minutes
Parameters	Up to 16 parameters in one test, 28 parameters configured into 8 profiles
User Interface	English operation interface; Touch screen, 3.5 inch Color LCD
Quality Control	Built-in Realtime Quality Control(RQC) system
Connection Interfaces	Bluetooth, WLAN, USB port, Ethernet interface
Print Mode	Optional external thermal printer, Veterinary Data Management Platform
Reaction Temperature	37°C±0.1°C
Data Capacity	More than 5 0,000 sets of patient and quality control data
Operation Environment	Temperature 10-30°C, Humidity 40 -85%
Power Requirement	AC 100V-240V, 50-60HZ
Dimensions	21.0(L)*12.5(W)*17.5(H)cm
Weight	2.2kg





## Veterinary Automatic Hematology Analyzer

### Model: Hemo 3600V

#### Features:

- 1) 10.4-inch true color TFT LCD & touch screen, more visible
- 2) Pre-defined for 13 animals plus an addition 3 user-defined animals, satisfy the requirements of most veterinary clinics
- 3) Automatically start a blank counting and auto-assessment of the results during start-up process
- 4) Automatically re-count after unclogging treatment while a counting hole is clogged, avoid re-collecting blood
- 5) Wider linearity range & excellent repeatability
- 6) Maintenance-free syringe
- 7) Built-in thermal printer to print large size report for only 5 seconds
- 8) Sweeping flow technology, Pulse discrimination technology, Intelligent floating threshold technology
- 9) Wide applications for Pet hospitals, Zoos, Livestock system, Laboratory Animal Center, etc.



Touch screen

#### Specifications:

Measuring Principles: Impedance method for cells counting, Cyanide free colorimetric method for HGB measurement

Measuring Channels: Double channel for counting

Throughput: From beginning of a test to completion of the printout: ≤60 Seconds

Counting Modes: Whole Blood, Pre-diluted Blood

Sample Volume: Whole Blood: ≤14μL, Pre-diluted Blood: ≤20μL

Species of Animals: 13 pre-defined animal settings (dog, cat, horse, mouse, rat, rabbit, pig, cow, buffalo, monkey, camel, sheep and goat) plus 3 programmable on request

Parameters & Histograms: Three-part differentiation of WBC covering dog, cat, mouse, rat, rabbit, monkey and horse, 21 parameters +3 histograms

WBC, Lymph#, Mid#, Gran#, Lymph%, Mid%, Gran%, RBC, HGB, MCV, MCH, MCHC, RDW-CV, RDW-SD, HCT, PLT, MPV, PDW, PCT, P-LCR, P-LCC, WBC Histogram, RBC Histogram, PLT Histogram

Alarm System: Multiple alarms of running status including blank counting abnormal, reagents empty, waste full, counting hole clogged, counting area leak or bubble, recorder abnormal, external printer abnormal and circuit abnormal, etc

Printout: English/Chinese print report, optional report formats

Storage: Store more than 10,000 sample results

Data Ports: One network port, one RS-232 port, four USB ports

Power: 220V, 50Hz Input power: ≤150VA

Dimensions: 368mm x 448mm x 475mm

Weight: ≤23Kg

## Cassette Type Veterinary Automatic Hematology Analyzer

### Model: Hemore

Hemore veterinary automatic hematology analyzer by the world leading Coulter principle, makes it possible to get laboratory level white blood cell counts and three-part differentials at the point of care testing (POCT).

#### Features:

- 1) Innovative design  
Microfluidics cassette  
No fluid maintenance
- 2) Accurate diagnosis  
Gold standard Coulter principle  
Standard QC and calibration
- 3) Easy and quick  
One second startup  
30 seconds to result  
No need for laboratorians



#### Specifications:

Screen: 7" Color touch screen

Principle: Coulter DC impedance detection method

Parameters: WBC, LYM#, LYM%, MID#, MID%, GRAN#, GRAN%, WBC histogram

Calibration: Factory calibration, Calibrator control

Sample: Capillary or Venous(EDTA) whole blood

Sample Volume: 5μL

Measurement Range: 0~100\*10<sup>9</sup>/L

Measurement Time: 30 seconds

Size: 95\*156\*126 inches (242\*397\*321mm)

Weight: 9kg

Power supply: AC 100V~240V, 50/60Hz

Data management: patient ID, patient data, time, operator ID, QC information, connectable with LIS system

#### Simple 4-step operation:

- 1) Blood sampling
- 2) Put into reagent cassette
- 3) Add blood sample
- 4) Counting and report

## Veterinary Coagulation Analyzer

## Model: CL-201, CL-202

## Features:

- 1) Easy keypad operation with LCD display
- 2) Internal thermal-sensitive printer
- 3) Reagent position with magnetic rotor.
- 4) Scattered light and percentage analysis ensure good results
- 5) Open reagent with low consumption, close reagent on request
- 6) Large memory to store up to 6000 test results
- 7) QC and calibration program incorporated
- 8) Auto power-on self-check
- 9) Multi-language software available on request
- 10) Electronically-linked pipette optional



CL-201



CL-202

## Specifications :

Principle: Scattered light with percentage analysis  
 Test Channel: 1 channel (CL-201), 2 channel (CL-202)  
 Light Source: Durable LED detector  
 Test Time: Normally 20-60 secs, Maximum time up to 600 secs  
 Sample Position: 5 positions  
 Reagent Position: 2 positions (1 magnetic rotor included)  
 Minimum Reagent Consumption: 30ul for APTT, 50ul for TT/FIB/PT  
 Position Warming-up: 37 degree  
 Memory: 6000 test results  
 Interface: RS-232  
 Display: LCD display  
 Input: Easy operation keypad  
 Output: Internal printer  
 Power Supply: AC 110/220V, 50-60Hz  
 Net Weight: 5Kg  
 Dimensions: 270\*270\*120mm

## Veterinary Electrolyte Analyzer

## Model: ISE-80PV(I), ISE-80PV(II)

ISE-80PV is a completely automatic Electrolyte Analyzer that implements advanced ion-selective electrode measurement technology to directly measure the concentration of K, Na, Cl, Ca, pH in blood serum, blood plasma, whole blood, and cerebrospinal fluid and dilute urine for cat, dog and other animals. It's a kind of clinical inspection equipment which is quick, accurate, convenient and practical.

## Features:

- 1) Small quantity of samples: The unique Back and Forth double positioning technologies are used to minimize the test sample quantity.
- 2) Basic Mode: The Analyzer has seven basic analysis modes: Cat, Dog, Rabbit, Monkey, Mouselet, Mouse, Guinea Pig.
- 3) Can add any other animals' mode according to user needs.
- 4) High precision, the analysis results of K, Na, Cl can be accurate to 0.01mmol/L.
- 5) The whole running process of the equipment is controlled by a computer. Also, automatic electric potential tracking and correcting software are adopted to ensure its stable performance.
- 6) The machine is free in switching between English and Chinese reports, meeting requirements of different customers.
- 7) The machine adopts innovative international patent technology such as wave theory flushing method and direct flushing pipe method to avoid block and crossed contamination.
- 8) The equipment can automatically intake specimen and locate target. It features fast analyzing. It only takes 25 seconds from absorbing the specimen to displaying results. Meanwhile, the built-in printer will print out the result. It's really quick and convenient.
- 9) After conducting analysis to specimens, the equipment will automatically flush, keeping the electrode standby in clean status.
- 10) The equipment is set with quality control correction procedure, and capable of correcting measured data automatically, as well as by the two parameters of pitch and average deviation.
- 11) The equipment is capable of storing 10000 results.
- 12) The equipment features power failure protection function. It can still store quality control and specimen data upon power failure. The storing time exceeds 5 years.
- 13) The equipment can work 24 hours a day. If there is no operation for a long time, the equipment will change into standby state, making it accessible at any time.
- 14) The equipment can be powered off at any time and greatly save reagent. It is suitable for Clinique.

## Specifications:

ISE-80PV(I): K, Na, Cl  
 ISE-80PV(II): K, Na, Cl, iCa, nCa, TCa, pH  
 Samples: blood serum, blood plasma, whole blood, cerebrospinal fluid and dilute urine  
 Analysis method: ion selective electrode  
 Measuring speed: ≤40s  
 Sample volume: 60-150ul  
 Storage: 10000 test results  
 Printer: Internal thermal printer  
 Power: ≤120W  
 Power supply: 110~220V±10%, 50-60Hz

## Range and accuracy of measurement:

Item	Range	Resolution	Accuracy (CV %)
K	0.5-15.0mmol/L	0.01mmol/L	≤1.5%
Na	30-200mmol/L	0.1mmol/L	≤1.5%
Cl	20-200mmol/L	0.1mmol/L	≤1.5%
Ca	0.1-6.0mmol/L	0.01mmol/L	≤2.0%
pH	4-9pH	0.01pH	≤2.0%





## Veterinary Blood Gas Electrolyte Analyzer

### Model: BG-800

#### Features:

- 1) Multi-combination parameters
- 2) Self-made maintenance free electrodes
- 3) Both for syringes & capillary
- 4) Long-lasting fluid system
- 5) All-in-one design calibrate cartridge
- 6) Cartridge expiration alarm & residue
- 7) Preheats reagents & sample
- 8) Auto QC cartridge with H/M/L level (optional)
- 9) Colorful touch screen with high resolution
- 10) Friendly operation interface
- 11) Infrared human-detector
- 12) Rich data management interface
- 13) Battery backup
- 14) Build-in thermal printer
- 15) Convenient bar-code system management
- 16) Economic cost per test

#### Specifications :

##### Sample Type:

Whole blood, Serum, Plasma, Dialysate, CSF

##### Model & Test items:

BG-800: pH, pCO<sub>2</sub>, pO<sub>2</sub>, K+, Na+, Cl-, Ca++, Hct  
 BG-800A: pH, pCO<sub>2</sub>, pO<sub>2</sub>, Hct  
 BG-800B: pH, pCO<sub>2</sub>, pO<sub>2</sub>, K+, Na+, Cl-, Hct  
 BG-800E: pH, pCO<sub>2</sub>, pO<sub>2</sub>, K+, Na+, Cl-, Ca++, Hct, Lac, Glu  
 BG-800Q: pH, pCO<sub>2</sub>, pO<sub>2</sub>, K+, Na+, Cl-, Ca++, Hct, Auto QC  
 BG-800AQ: pH, pCO<sub>2</sub>, pO<sub>2</sub>, Hct, Auto QC  
 BG-800BQ: pH, pCO<sub>2</sub>, pO<sub>2</sub>, K+, Na+, Cl-, Hct, Auto QC  
 BG-800EQ: pH, pCO<sub>2</sub>, pO<sub>2</sub>, K+, Na+, Cl-, Ca++, Hct, Lac, Glu, Auto QC

##### Measuring Range:

pH(CH): 6.000-9.000  
 pCO<sub>2</sub>: 0.667-26.67kpa, 5.0-200.0mmHg  
 pO<sub>2</sub>: 0-106.7kpa, 0-800.0mmHg  
 K: 0.50-10.00mmol/L  
 Na+: 50.0-200.0mmol/L  
 Cl-: 20.0-200.0mmol/L  
 Ca++: 0.1-5.0mmol/L  
 Hct: 12.0-65.0%  
 B.P.: 500-800mmHg  
 Glucose: 1.1-66.7mmol/L  
 Lactate: 0.4-30.0mmol/L

##### Analysis Time: <90s

Sample Volume: 95ul for whole blood, 50ul for capillary blood

Calibration: Automatic, programmable, 1-point and 2-point calibration

Data Storage: >10000

Display: 10.4" TFT touch screen

Battery: Nickel-metal hydride battery, 3.0Ah

Printer: Built-in thermal printer, 70mm

Barcode Reader: Up to 14 kinds barcode type

Dimension (Length\*width\*Height):

Instrument: 400mm×574mm×344mm

CAL PAK: 258mm×180mm×70mm

Auto QC: 103mm×180mm×70mm

Weight: 18KG

Working Environment: 15℃~30℃

Storage Environment: 5℃~40℃

Power supply: 100-240V~±10%, 50/60±1Hz, Power: 150VA



## Handheld Veterinary Urine Analyzer

### Model: UR-10V



#### Features:

- 1) Small size and light weight
- 2) 2.4" LCD screen, easy to operate
- 3) Automatic data analysis and report generation
- 4) High reproducibility and reliable results
- 5) Applicable for animal hospitals, veterinary labs, farm, etc.
- 6) 10 test items: Leukocytes(LEU), Urobilinogen(UGB), Nitrite(NIT), Protein(PRO), PH, Blood(BLD), Specific Gravity(SG), Ketone(KET), Bilirubin(BIL), Glucose(GLU)

#### Specifications:

Display: 2.4" LCD screen  
 Keypad: Touch keypad  
 Throughput: 300 tests/hour (fast mode), 60 tests/hour (normal mode)  
 Test items: 10  
 Memory: 1000 Recent Test Results  
 Printer: Wireless thermal printer (optional)  
 Interface: Mini USB  
 Power supply: Li-battery DC 5V, 2A  
 Charger power supply: AC 100-240V, 50/60Hz  
 Net weight: 160g  
 Dimension: 110mm\*68mm\*27mm

## Biological Microscope

## Model: BM-117M

**Specifications:**

Viewing Head: Compensation free binocular head, Inclined at 30°, interpupillary distance 48-75mm  
 Eyepiece: WF 10×/18  
 Objective: Achromatic Objective 4×, 10×, 40×, 100×  
 Nosepiece: Backward Quadruple Nosepiece  
 Stage: Double Layer Mechanical Stage 132×142mm/ 75×40mm  
 Focusing: Coaxial Coarse & Fine Adjustment, Moving Range 24mm, Fine Division 0.004mm  
 Condenser: Abbe NA 1.20 with Iris Diaphragm & Filter  
 Illumination: LED 3W, Brightness Adjustable

**Optional:**

Compensation Free Trinocular Head (inclined at 30°, interpupillary Distance 55-75mm);  
 Eyepiece: P16×/11;  
 Halogen Lamp 6V/ 20W, Brightness Adjustable;  
 Phase Contrast Kit;  
 Dark Field Attachment;  
 Polarization Attachment.



## Biological Microscope

## Model: BM-200M2

**Features:**

- 1) With excellent optical system and reliable structure, it makes the image much sharper, and the operation easier. With wide range of accessories (e.g. dark field, phase contrast, epi-fluorescent) and advances to expand the application scope of the BM-200M2, the versatility of the microscope provides more microscopy for you.
- 2) Big operating space with backward nosepiece, sharp image with high quality objectives
- 3) Easier comparing test with dual slides finger of mechanical stage
- 4) Comfortable handling with precise focusing system

**Specifications:**

Viewing Head: Compensation free binocular head, Inclined at 30°, interpupillary distance 48-75mm  
 Eyepiece: Wide Field Eyepiece WF10×/18  
 Objective: Semi-plan Achromatic Objective 4×, 10×, 40×, 100×  
 Nosepiece: Backward Quadruple Nosepiece  
 Stage: Double Layer Mechanical Stage 140×140mm/ 75×50mm  
 Condenser: NA 1.25 Abbe Condenser with Iris Diaphragm and Filter  
 Illumination: Halogen Lamp 6V/ 20W, Brightness Adjustable

**Optional:**

Monocular Head , Trinocular Head  
 Quintuple Nosepiece  
 Plan Achromatic Objective  
 Infinite Achromatic Objective  
 Infinite Plan Achromatic Objective  
 Big size stage with dual slides finger  
 Kohler Illumination  
 Aspherical Collector



## Biological Microscope

## Model: BM-2C

**Features:**

BM-2C biological microscope uses very widely. It is suitable to biology, pathology, bacteriology observation, teaching and professional research, clinical experiment and routine medical examination for medical and health institutions, labs, graduate institutes and colleges. It is a necessary instrument for the schools' labs too.  
 BM-2C biological microscope's design is advanced, sculpt is novelty, adopts different kinds of techniques to makes microscope is easy to use, safety and credibility.

**Specifications:**

Eyepieces magnification: 10×, 16×  
 Objectives magnification: 4×, 10×, 40×, 100×(oil)  
 Optical magnification: 40×- 1600×  
 Articulated type binocular, interpupillary distance adjustment range: 55-75mm, inclined 30°, turning to 360°  
 Condenser: N.A. 1.25, Abbe condenser with Iris Diaphragm  
 Filters: blue, yellow, green and frosted  
 Stage size: 125×130mm move range: 60×30mmmm, vernier: 0.1mm  
 Coarse/fine focusing hand wheel, focusing range: 35mm, minimum division: 0.002mm  
 Electronic light source: 6V/20W with continuous adjustable brightness  
 Anti-fungus: yes.

**Standard Configuration:**

Microscope main unit, Plan eyepieces (10×,16×), Achromatic objectives (4×, 10×, 40×, 100×(oil)), Binocular tube, Filters (blue, yellow, green and frosted glass), Alternate halogen lamp, Oil (compounded).





## Digital Microscope

### Model: DM-130

#### Features:

- 1) Integrated digital microscope, resolution 1280×1024 (1.3M pixel)
- 2) USB2.0 output, plug and unplug freely
- 3) Support WINDOWS 2000/XP/VISTA system, Equipped with powerful applied software
- 4) Economic features, widely used in academic demonstration and health system

#### Specifications:

Camera System: Valid Pixel: 1280×1024 (1.3M pixel); Output Mode: USB2.0; Operation System: WINDOWS 2000/XP/VISTA; Software: ScopelImage 9.0; Range of Viewing Field: >90%

Viewing Head: Seidentopf type Binocular Head, Inclined at 30°, Interpupillary Distance 48-75mm

Eyepiece: WF10×/18

Objective: Achromatic Objective 4×, 10×, 40×, 100×

Nosepiece: Backward Quadruple Nosepiece

Stage: Double Layers Mechanical Stage 132×142mm/ 75×40mm

Condenser: Abbe NA1.20 with Iris Diaphragm & Fliter

Focusing: Coaxial Coarse & Fine Adjustment System, Range 24mm, Fine Division 0.004mm

Illumination: LED 3W, Brightness Adjustable



#### Optional:

Eyeiece: P16×/11;  
Halogen Lamp 6V/ 20W, Brightness Adjustable;  
Phase Contrast Kit;  
Dark Field Attachment;  
Polarization Attachment.



## Tabletop Low Speed Centrifuge

### Model: L420, L500, L600

#### Features:

- 1) Microprocessor control and DC brushless motor.
- 2) Touch panel and LCD display.
- 3) RCF value can be calculated automatically.
- 4) Special damping structure to reduce vibration.
- 5) Electrical door interlock, with which centrifuge cannot work if the door is open and the door cannot be opened when it is working.
- 6) Stainless rotors with variety of capacity for convenient operation.



#### Specifications:

Model	L420	L500	L600
Order No.	186000	211000	213000
Max. Speed	4200rpm	5000rpm	6000rpm
Max. RCF	2760xg	4030xg	5120xg
Max. Capacity	12x20ml	16x15ml	16x15ml
Speed Accuracy	±30rpm	±30rpm	±30rpm
Time Setting Range	1min to 99min	1min to 99min	1min to 99min
Noise	≤65dB(A)	≤65dB(A)	≤65dB(A)
Power Supply	AC 110~ 220V, 50/60Hz	AC 110~220V, 50/60Hz	AC 110~220V, 50/60Hz
Total Power	250W	250W	250W
Dimension (WxDx H)	370x432x250mm	370x432x250mm	370x432x250mm
Package (WxDxH )	435x580x312mm	435x580x312mm	435x580x312mm
Net Weight	14kg	15kg	15kg

#### L420 Rotors Options:

- a) Code 808400: Capacity: 18 x 10ml, Max. Speed: 4000rpm, Max. RCF: 2200xg, Adaptor: 808409(7ml)
- b) Code 808500: Capacity: 12 x 20ml, Max. Speed :4000rpm, Max. RCF: 2200xg, Adaptor: 808512 (5ml evacuated tube)
- c) Code 854700: Max. Capacity: 4x50ml,Max. Speed: 4200rpm, Max. RCF: 2760xg
- d) Code 854800: Max. Capacity: 12x15ml, Max. Speed: 4200rpm, Max. RCF: 2760xg
- e) Code 854900: Max. Capacity: 8x10ml/16x5ml, Max. Speed: 4200rpm, Max. RCF: 2760xg
- f) Brackets

#### L500 Rotor Options:

- a) Code 808350: Rotor Capacity: 24x10ml, Max. Speed: 5000rpm, Adaptor: 808308(1.5ml)
- b) Code 855201: Max. Speed: 4200rpm, Max. RCF: 2760xg
- c) Brackets

#### L600 Rotor Options:

- a) Code 808700: Rotor Capacity: 12x15ml, Max. Speed: 6000rpm, Max. RCF: 5120xg
- b) Code 855201: Max. Speed: 4200rpm, Max. RCF: 2760xg
- c) Brackets

## Micro-Hematocrit Centrifuge

### Model: TG12M

#### Features:

- 1) Microhematocrit centrifuge can be used to determine hematocrit value and separate the micro-blood from micro-solution.
- 2) Microprocessor control and DC brushless motor, which is stable and noiseless during operation.
- 3) The parameters can be freely revised during a run.
- 4) RCF value can be calculated automatically, unique RCF Key for convenient observation.
- 5) Seconds display if the centrifugation time is less than 1 min.
- 6) The protective functions of self-diagnose and overspeed for better safety.



#### Specifications:

Model	TG12M
Order No.	160000
Max. Speed	12000rpm
Max. RCF	14800xg
Max. Capacity	36-place microhematocrit rotor
Speed Accuracy	±30rpm
Time Setting Range	1min to 99min
Noise	<62dB(A)
Power Supply	AC 110~220V±10%, 50/60Hz
Total Power	300W
Dimension (WxDxH)	330x390x300mm
Package (WxDxH)	395x650x340mm
Net Weight	25kg

#### Optional Rotors:

- a) Code 854200: Capacity: 36-place, Max. Speed :12000rpm, Max. RCF: 14800xg
- b) Code 852700: Capacity: 24-place, Max. Speed :12000rpm, Max. RCF 14800xg
- c) Code 852800: Capacity: 12-place, Max. Speed :12000rpm, Max. RCF: 14800xg