



# SuperMark 1.5T

A-combi & AI Technologies Available MRI System  
Redefined for Your Concerns

Imported and Distributed by:  
**AJJ Healthcare Management Pte Ltd**  
8 Commonwealth Lane, #02-04, Singapore 149555  
Office: (+65) 6908 4251  
24hr hotline: (+65) 6908 4252

Manufactured by:  
Shenzhen Anke High-tech Co., Ltd.  
Address: Block B, LingYa Industrial Zone, Tangtou No.1 Road,  
Bao'an District, Shenzhen, 518108, P.R. China



Insight into life



**AJJ**  
HEALTHCARE MANAGEMENT PTE LTD



ANKEMRI-2020-V.2.0-ENG



## The 4th Generation of ANKE Superconducting MRI System

SuperMark 1.5T is a latest generation superconducting MRI system based on over 30 years of experience in research and development, which focuses on user's concerns. This system is equipped with a newly upgraded hardware and software platforms with A-combi and AI technologies that benefit users a lot and deliver patients with more comfortable experiences. It features new user-friendly design, faster imaging speed, higher image quality and greatly improved work efficiency.

SuperMark 1.5T provides not only conventional pulse sequences and basic clinical applications, but also advanced functional applications. Moreover, it adopts brand new professional APEX operation system which ensures easy operation and fast diagnosis.

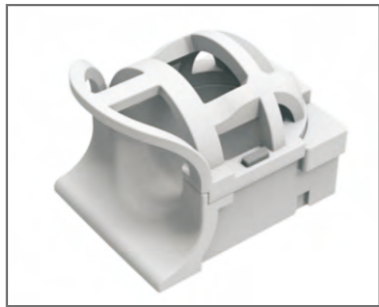
### **Short bore superconducting magnet**

High magnetic field uniformity, easy to achieve large FOV rapid imaging and high-quality fat suppression imaging

### **Liquid helium "zero" boil-off technology**

High cost-effective SuperMark 1.5T equipped with "4K" cold head and utilizes "zero" boil-off technologies, which ensure stable running without liquid helium refilling.

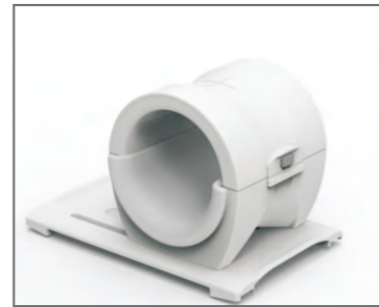
## PA Receiving Coil



Head & Neck Coil



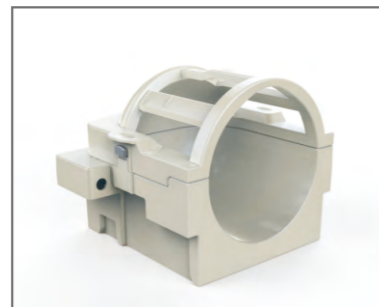
Body Coil



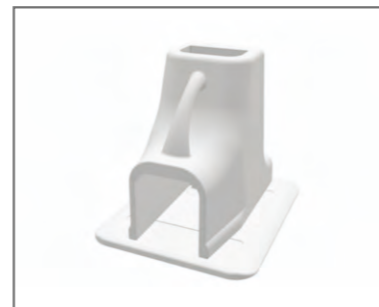
Knee Coil



Shoulder Coil



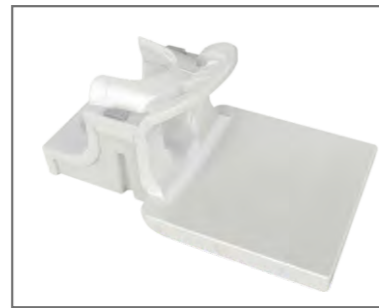
Head Coil (Optional)



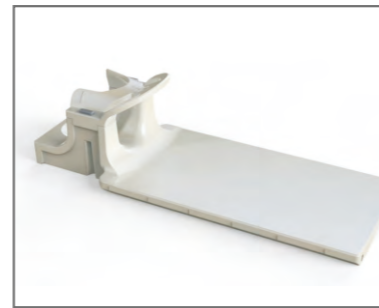
Ankle Coil (Optional)



Wrist Coil (Optional)



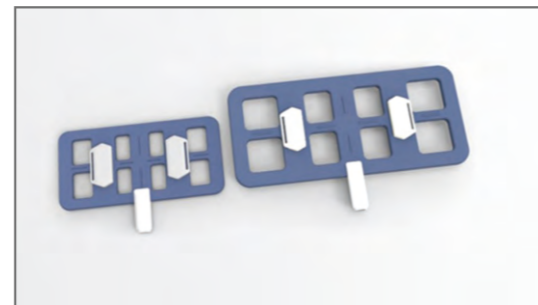
Neck coil (Optional)



Spine Coil (Optional)



Breast Coil (Optional)

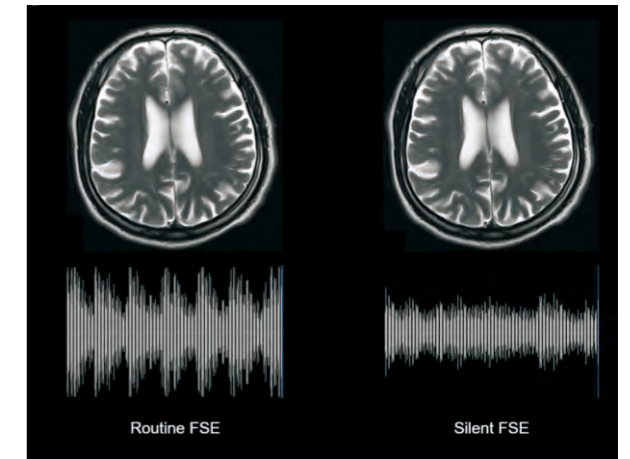
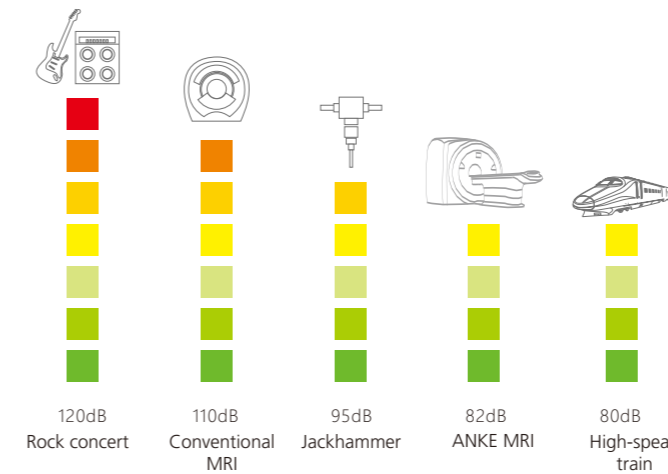


Flexible Coils (2 Size, Optional)

The specific configuration of receiving coils is subject to the product configuration list.

## Silent Scanning Technology

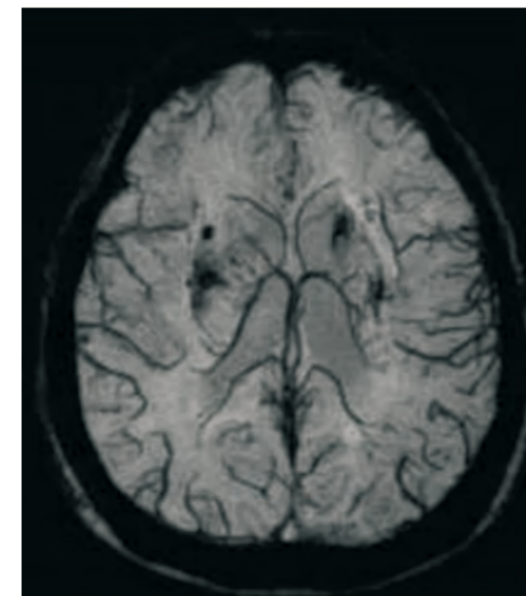
By the concept of user-friendly design, SuperMark 1.5T can provide you silent pulse sequences with Lower noise, reducing the irritability of patient.



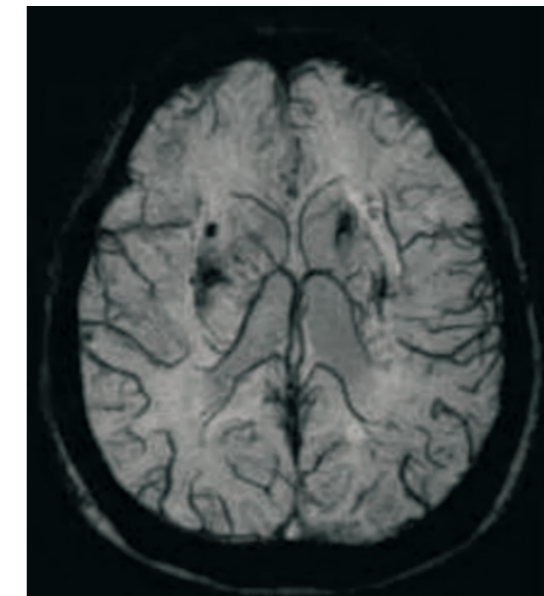
## Speed & Efficient Concern

### Dual-engine parallel acquisition technique

Parallel acquisition technology (PAT) is a new fast acquisition technology applied to SuperMark 1.5T. By reducing the number of phase coding, the acquisition speed is greatly accelerated, and the image quality and spatial resolution are maintained at a high level.



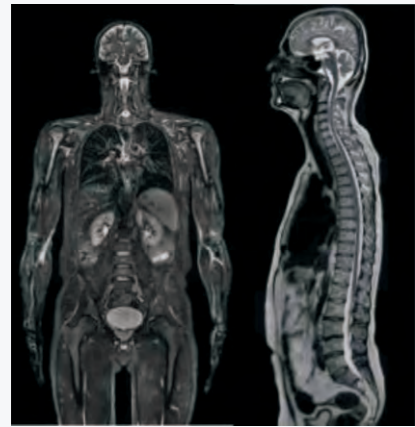
With Dual-engine Scan time = 4'48''



Without Dual-engine Scan time = 8'09''

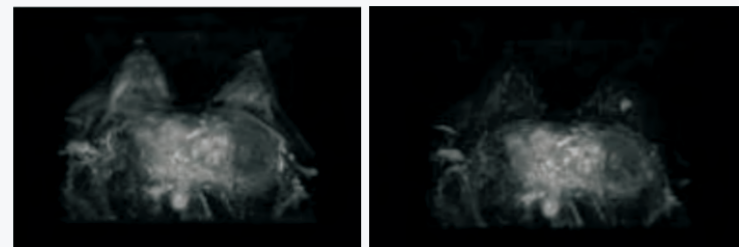
# A-combi & AI Technologies\*

The new SuperMark 1.5T is innovated and featured by A-combi & AI Technologies. A-combi is a coil integration technology developed by ANKE that extends your MRI daily applications. Together with AI (Artificial Intelligence) technology, it will enable you to handle your MRI practice with extra productivity, consistency and efficiency easily and confidently. You can perform several body part scans without patient repositioning. Of course, it allows you to make a whole-body scanning and whole spine imaging boosted by AI technology without any interruption.



AI technology is introduced on SuperMark 1.5T system, it will give you a complete new idea on MRI system applications like Intelligent alignment, AI stitching and AI de-noising etc.. Especially, online Elastic Motion Correction (EMC) will sharply to reduce your workload and quickly produce images with excellent quality that delivers you more diagnostic confidence, particularly, when performing dynamic enhancement applications.

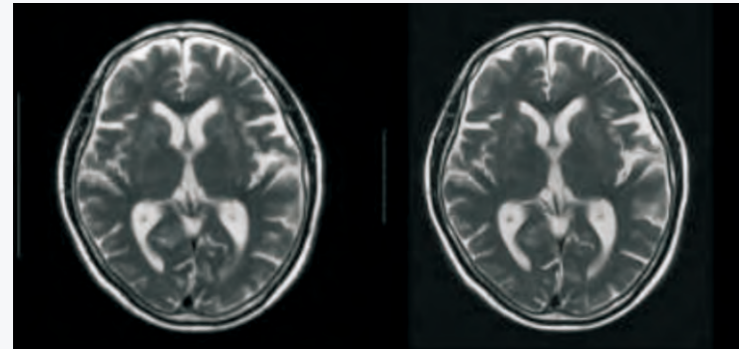
## AI On-line Elastic Motion Correction (EMC) \*



Without AI correction

with AI correction

## AI de-noising and image enhancement technique\*



Without AI de-noising, scan time=03'44"

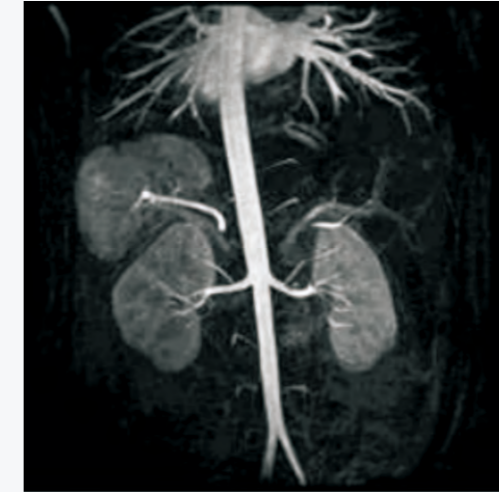
With AI de-noising, scan time=00'56"



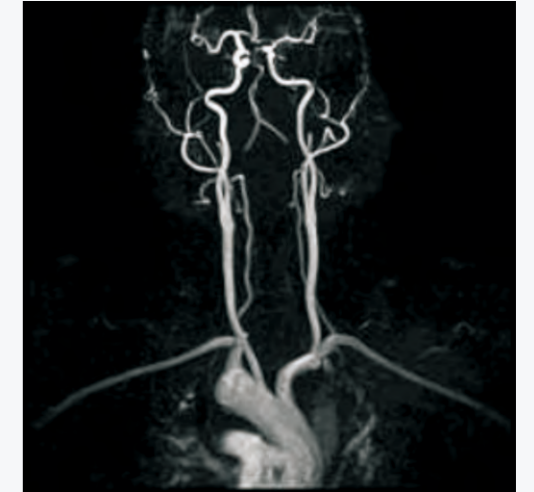
# High-level Application Concern

ANKE's SuperMark 1.5T takes fully comprehensive consideration for you, some useful and high-level applications are available on this system. Definitely, it will provide you mostly expected high-level applications. Some might be profitable for your business, and some be accessible only on 3T systems.

## Auto-triggered CE-MRA\*

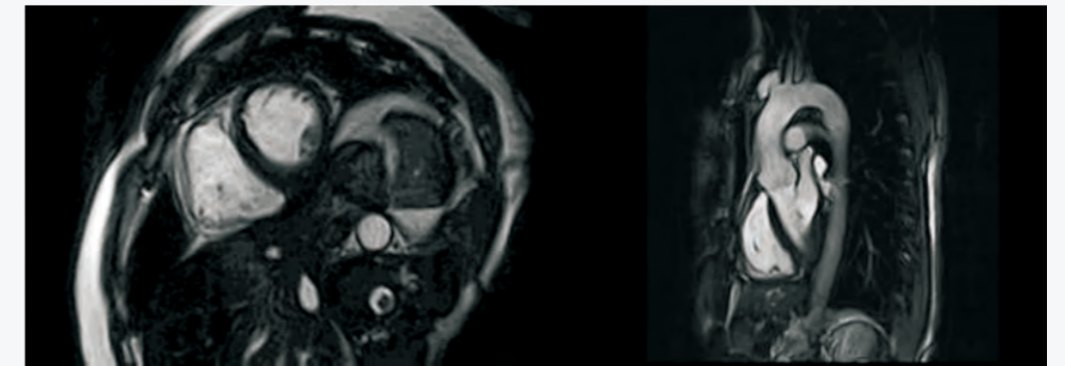


TR=4.8ms, TE=2.1ms, FA=30  
Slice thickness=1.5mm

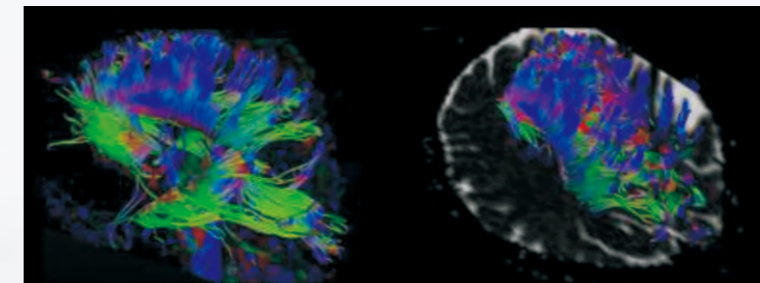


TR=4.8ms, TE=2.1ms, FA=30  
Slice thickness=1.2mm

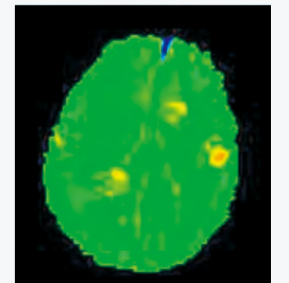
## Cardiac Cine\*



## DTI\*



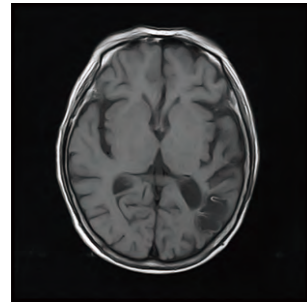
## APT\*



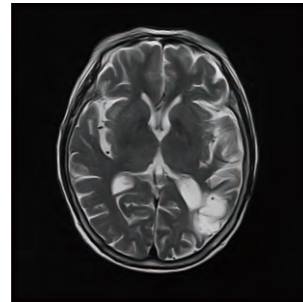
Marked with "\*" means it is not a standard offer, please contact us for further information

# EXCELLENT IMAGE QUALITY

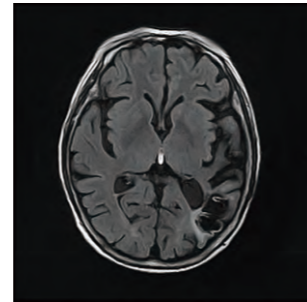
## Brain



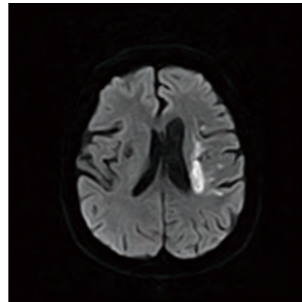
T1WI



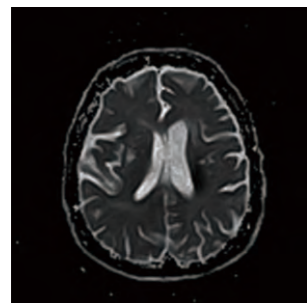
T2WI



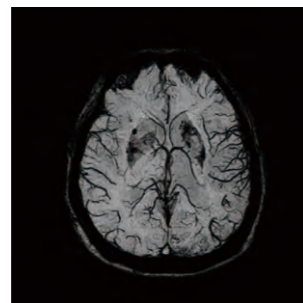
FLAIR



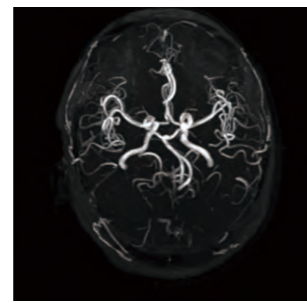
HD-DWI



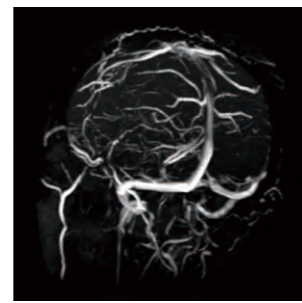
ADC



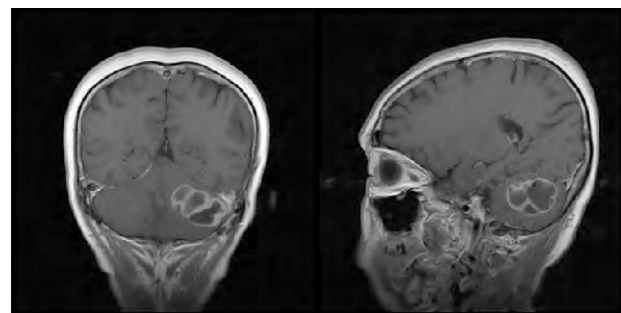
A-SWI



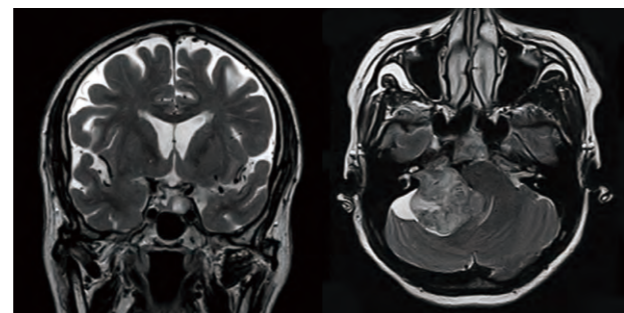
3D-TOF MRA



3D-TOF MRV

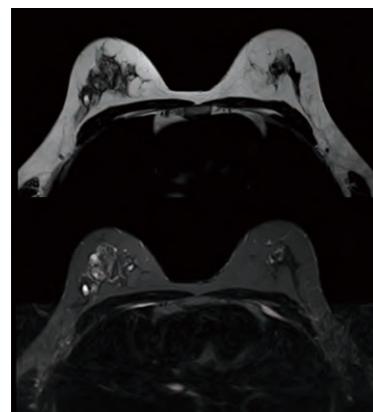


T1WI-C+

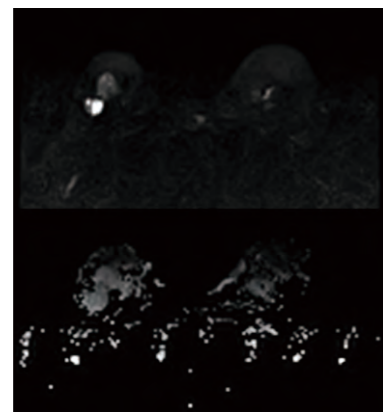


T2WI, THK=2mm

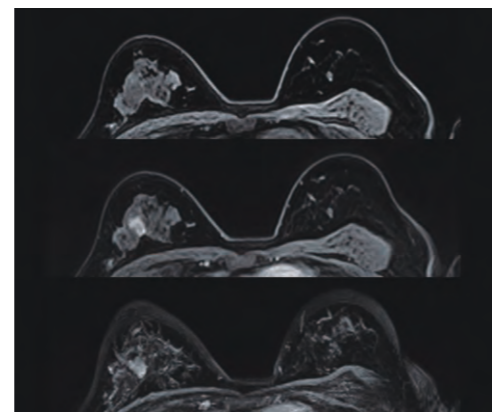
## Breast



T2WI & STIR

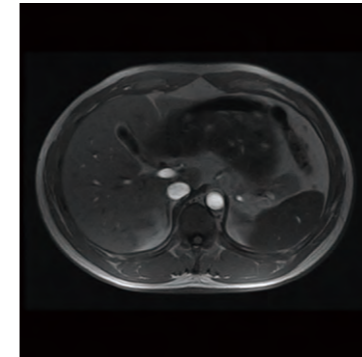


DWI & ADC

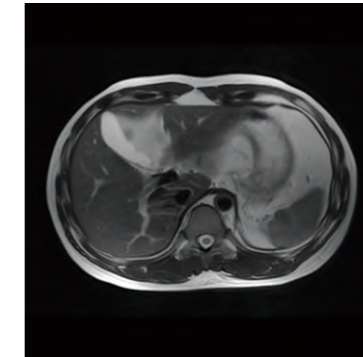


Dynamic Enhancement & Substraction

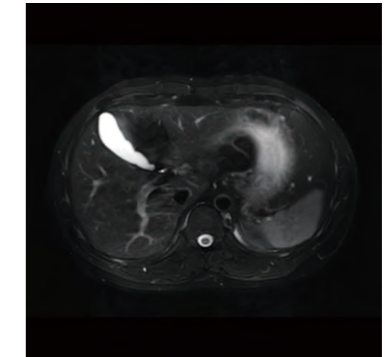
## Abodmen



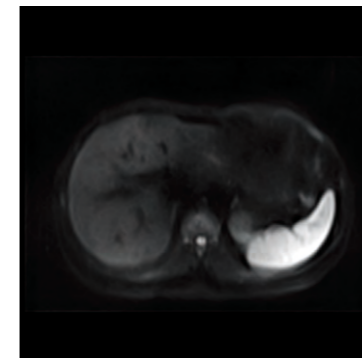
T1WI



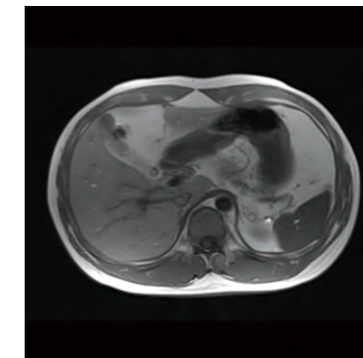
T2WI



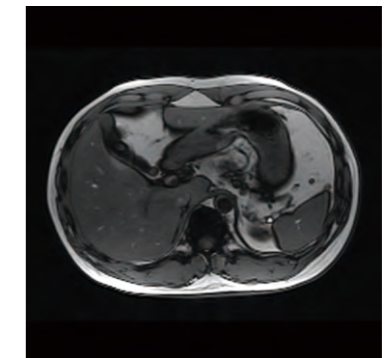
a-SPAIR



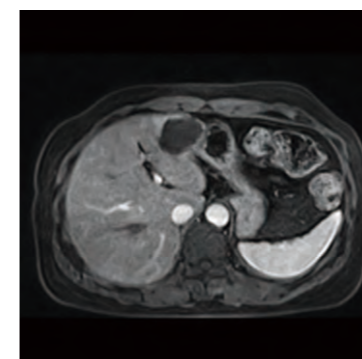
DWI



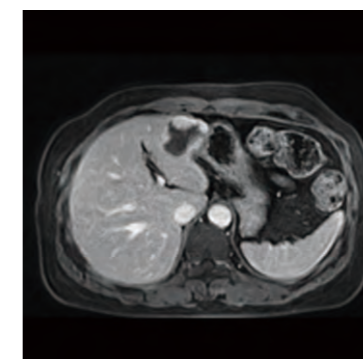
In Phase



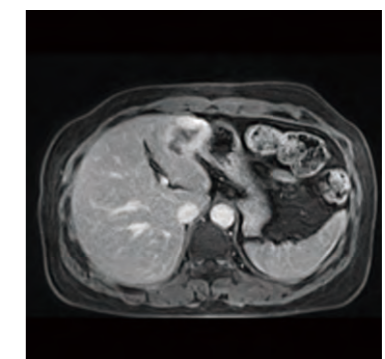
Out Phase



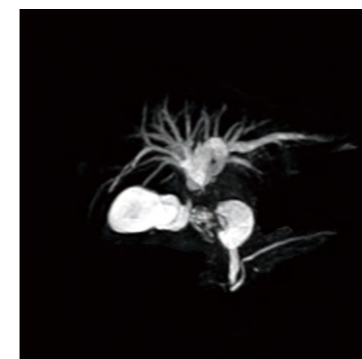
DE Phase I



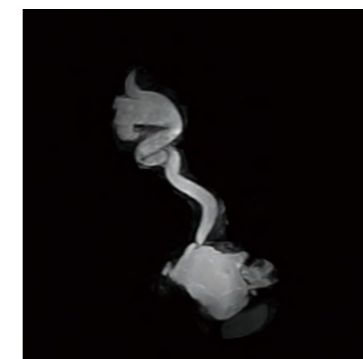
DE Phase II



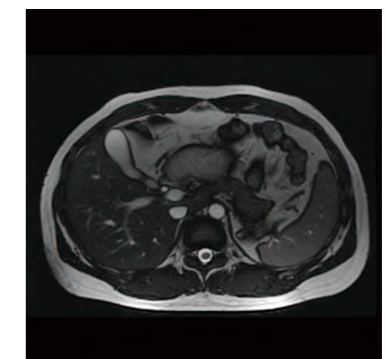
DE Phase III



MRCP



MRU



True-FISP

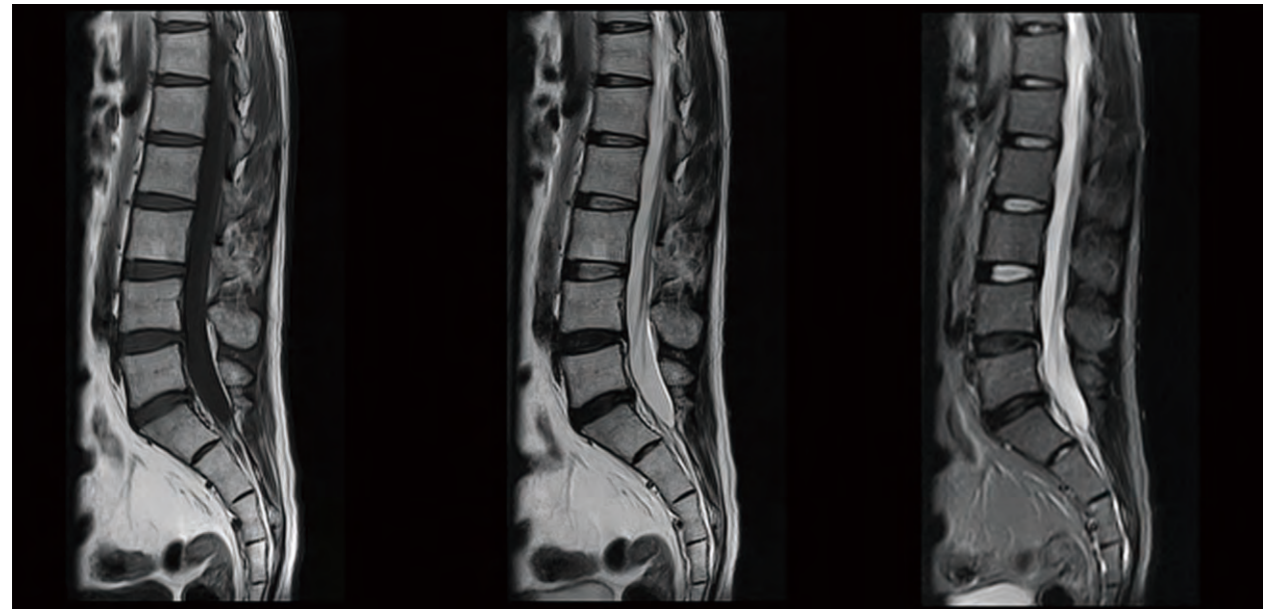
# Spine



T1WI

T2WI

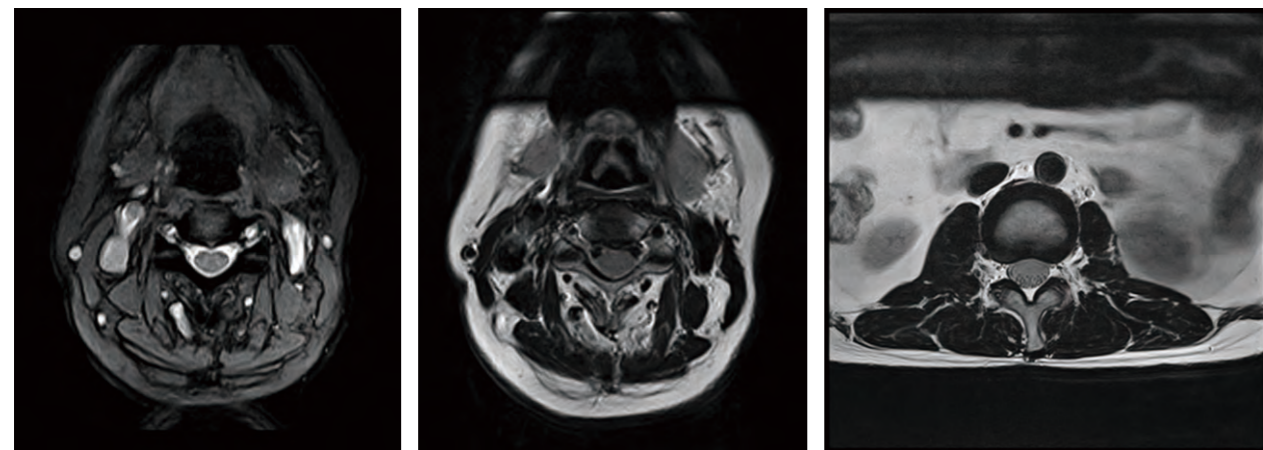
STIR



T1WI

T2WI

STIR

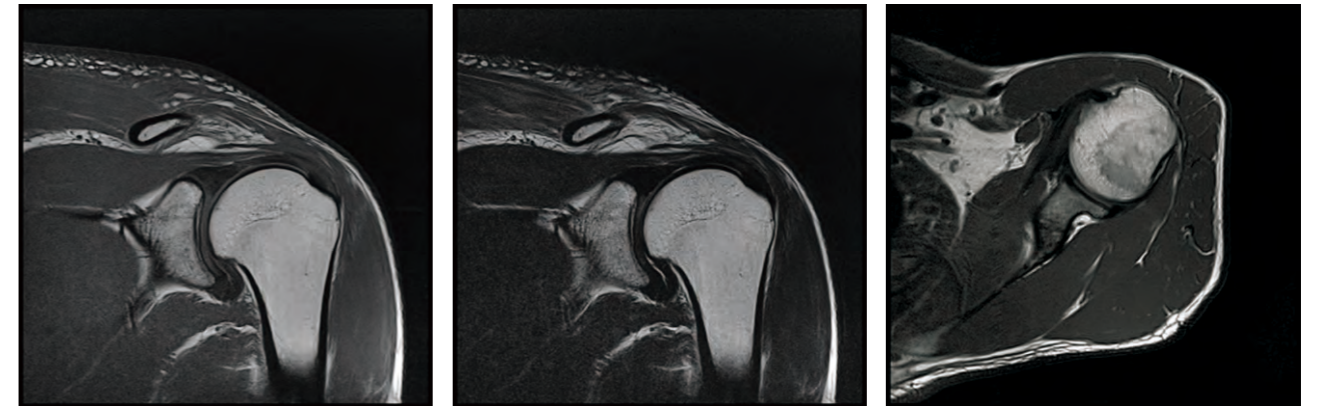


ME-T2\*WI

Tra-T2WI

Tra-Intervertebral Disk

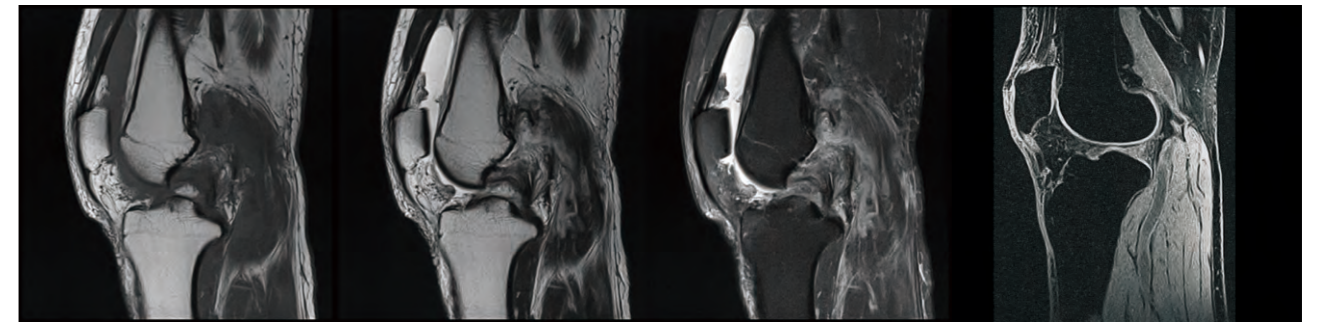
# MSK



T1WI

T2WI

T2WI

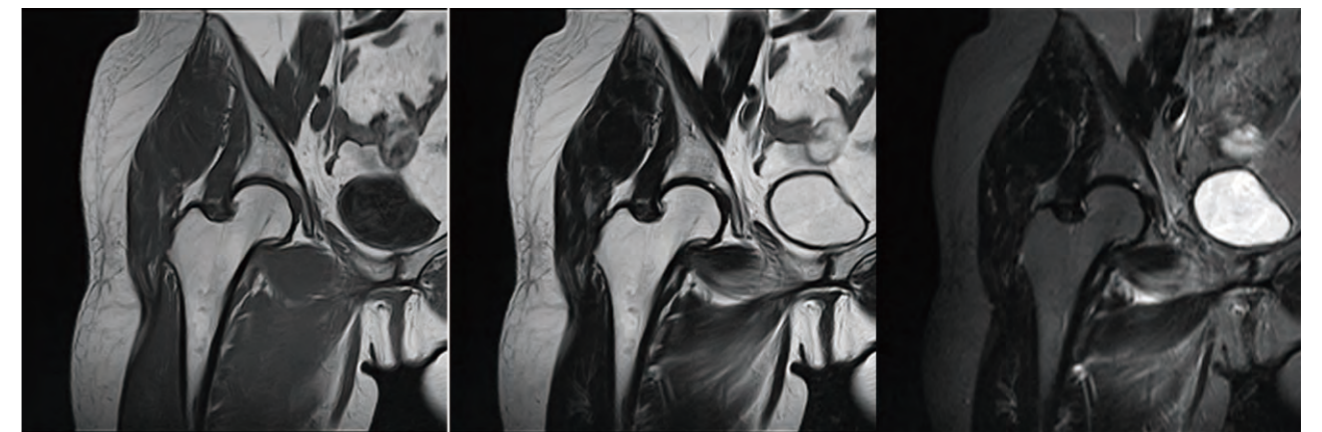


T1WI

T2WI

PD-FS

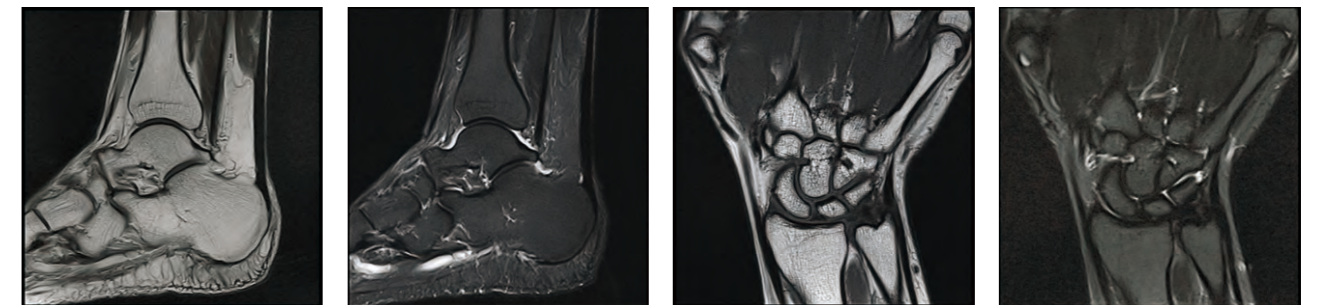
WE, THK=1.5mm



T1WI

T2WI

STIR



T1WI

STIR

T1WI

STIR



**High ROI**  
Low cost, high return

### Low Investment

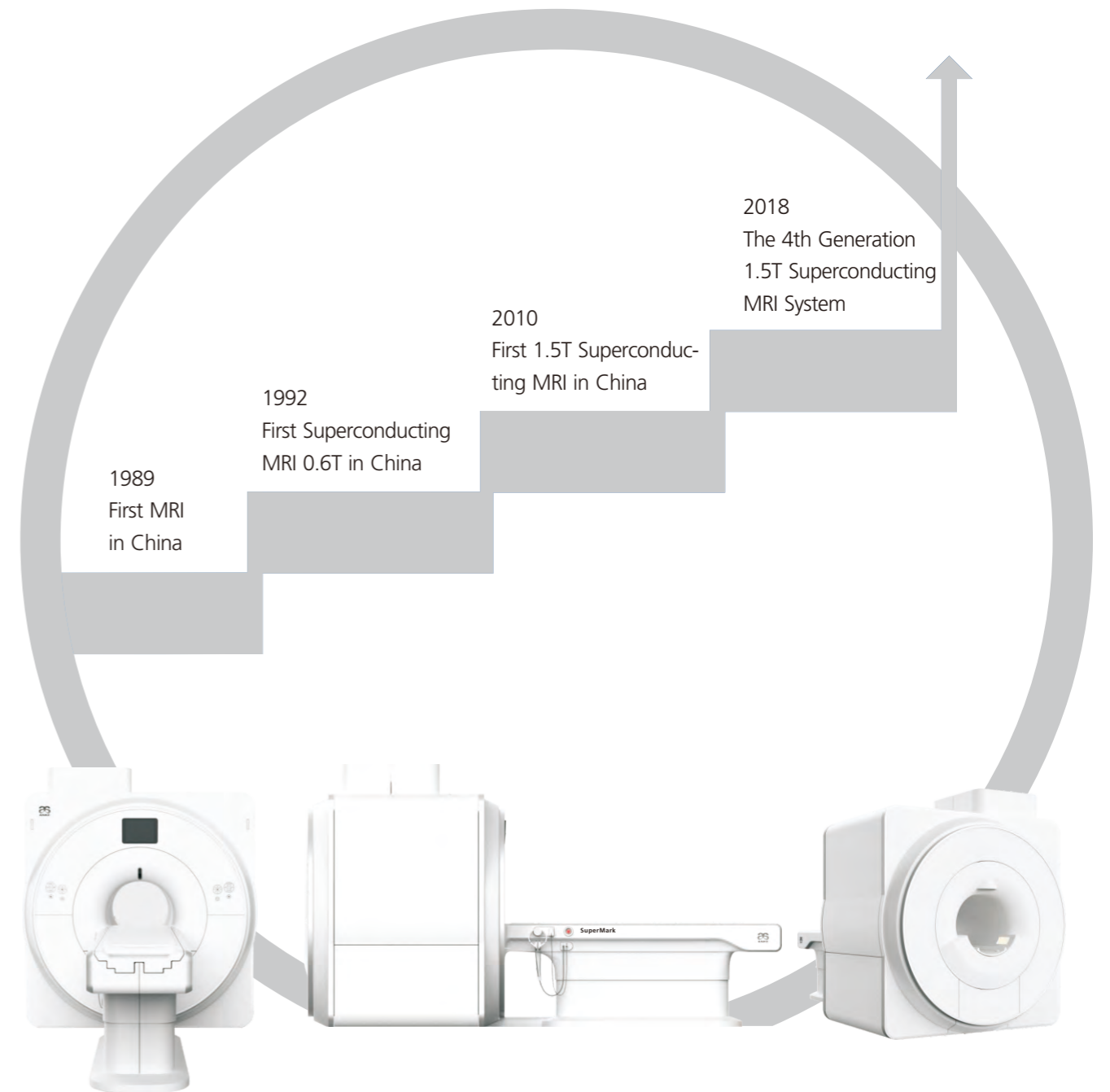
- High cost-effective superconducting MRI system;
- Zero liquid helium consumption, low running and maintenance cost;
- Upgrade fully supported by core technologies with patents;
- Low power consumption;
- Compact magnet design, minimum installation space: 35 square meters.

### High Return

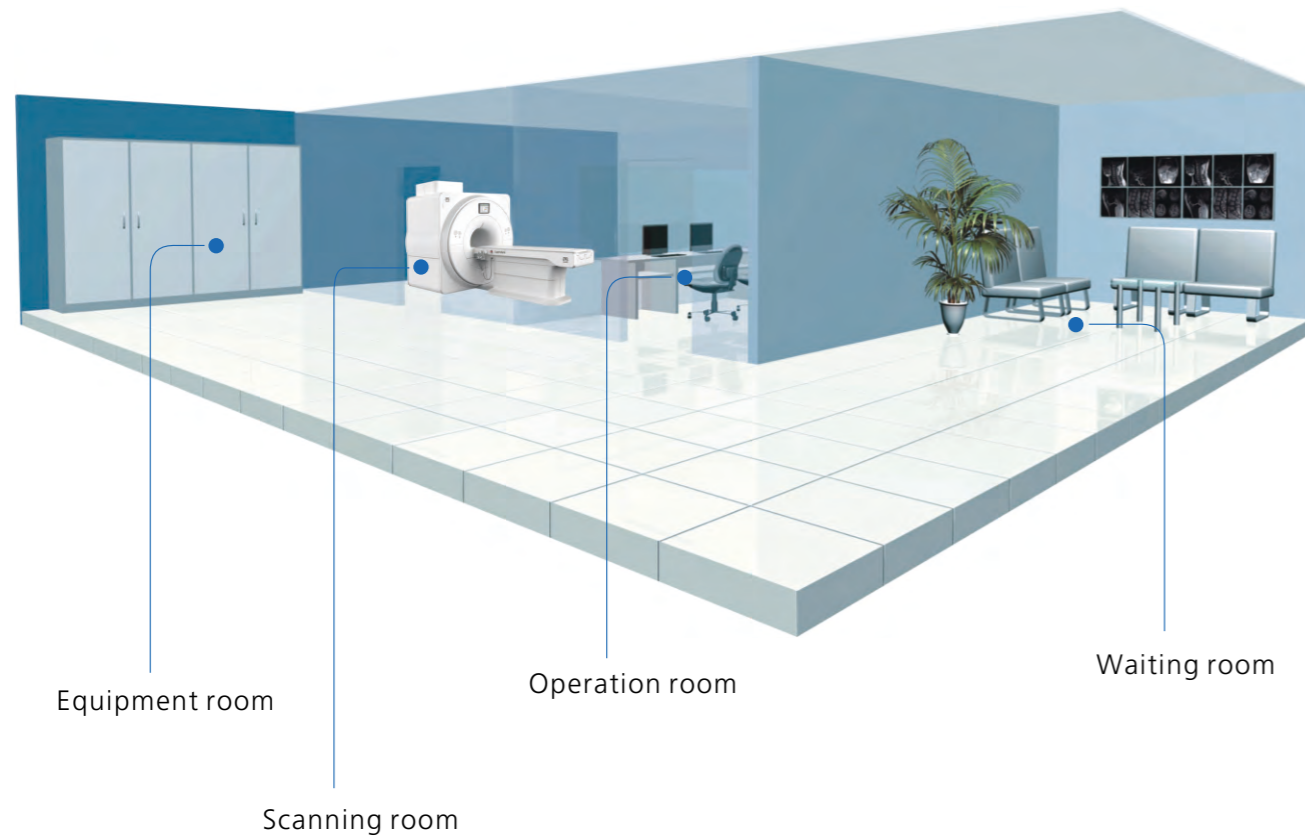
- High resolution images with thin slice thickness improve diagnosis;
- Short bore magnet design makes patients comfortable;
- Fast scan speed improves work efficiency.

## Leading Chinese MRI into Superconducting Era

Over 30 years experience and technology accumulation in MRI ensure outstanding performance



# Flexible Site Design



Equipment room

Operation room

Waiting room

Scanning room

## Standard room size

	Length(mm)	Width(mm)	Height(mm)
Magnet room	6500	5500	3300
Equipment room	5500	3000	3300
Operate room	4500	4000	3200

## Power Supply

Phase Voltage	3 Phase, 380V
Voltage Stability Range	10%
Frequency Range 50/60Hz,	1Hz
Connection Power Value	60KVA
Average power value of normal operation with full load	

# All-around Service Support



Service response within 24 hours;



Rich spare parts backup and fast delivery;



Efficient service network, over 100 service engineers.

